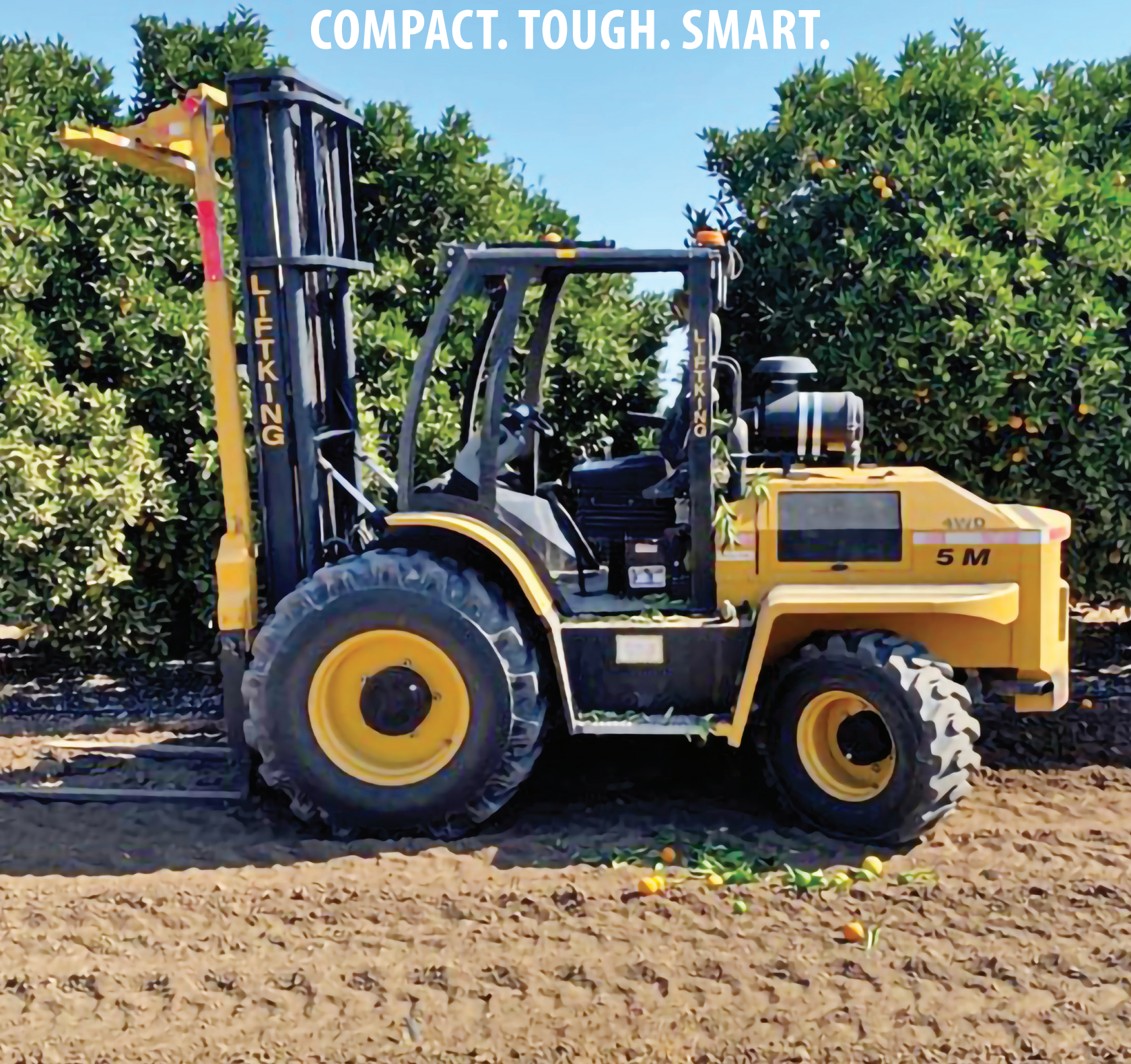


AG Series | LK6M-AG

AG SERIES FORKLIFTS

COMPACT. TOUGH. SMART.



LK6M-AG Series Specifications

Capacity @ 24" LC	6000lbs
Length (less forks)	149 in
Width	79 in
Height - overhead guard	100 in
Wheelbase	81 in
Turning Radius	170 in
Ground Clearance	10 in

Lift Height	168 in	Engine	Perkins Tier 4 Turbo Diesel, 74 hp
Carriage Width	60 in	Optional:	Caterpillar Tier 4 Turbo Diesel, 74 hp
Tilt Forward	38°	Transmission	ITL 4-Speed Powershuttle
Tilt Rearward	11°	Axle - front	ITL Limited Slip with Planetary Hubs
Mast Sideshift (total)	6 in	Axle - rear 2WD	Oscillating with HD single steer cyl.
Fork Length	48 in	Axle - rear 4WD	ITL Oscillating with Planetary Subs
Ground Clearance	10 in	10 in	10 in

Features

The agricultural industry has unique requirements for material handling applications.

The design behind Liftking's Agriculture Series (AG) Forklifts places emphasis on light weight, compact dimensions, and effortless maneuverability. The benefits of the shortened track and wheelbase are immediately apparent in narrow field rows and tight operating quarters. Increased road speed reduces travel time between easy access hood design and thoughtful placement of maintenance components are much appreciated by technicians.

Operator comfort was no less a priority during the re-design that resulted in a new cabin structure with enhanced ergonomics and all-day comfort. With the greatly improved sight-lines, extra-wide steps and full LED lighting, safety is evident throughout.

Standard Equipment

Heavy Duty Clearview Roller Mast with Dual Chains • Hydraulic Mast side-shift • FOPS Operator Compartment • Oil Cooled Submerged Disc Brakes • Power Steering • Soft-shift Powershuttle Transmission • Limited Slip Differential • Tier 4 Turbo Diesel Engine • LED Headlights, tail lights, reverse lights, and turn signals with safety guards • External side view mirrors • Wide-grip handrails • Extra wide steps • Ion-nitride cylinder rods • Electric horn and automatic backup alarm • Tilt steering column with anti-restart ignition and neutral safety interlock • Adjustable suspension seat with armrests and retractable safety belt • 4 wheel fenders • Engine oil pressure gauge, fuel gauge, tachometer, hour meter, and warning lights • High durability powder coat paint • Operator, maintenance and illustrated parts manuals included • 1 Year / 2000 hours limited warranty (2 year engine warranty).

Optional Equipment

Various mast/carriage/fork types and sizes • Buckets, sod carriages and other attachments • Selectable 4WD system • Lockable fuel and hydraulic • Air pre-cleaner • Tinted Windows • Sunvisor • Deadman set • Safety-Start Seatbelt • Heated Mirrors • Cold Weather Package • Engine shutdown package • Radio • Enclosed all weather operator compartment with HD heater, sliding windows, wipers, lift-off 2-piece doors • ROPS Operator compartment • Air Conditioning • Air ride suspension seat with arm rests • Extra wide low ground pressure tires and other styles • Contact dealer for other options.